

# CHIPS & Chatter

THE SILICON VALLEY WOODTURNERS' NEWSLETTER

November's  
Program:  
Jim Rodgers  
Segmenting Demo

## Virtual Meetings

We continue to hold our virtual meetings cohosted with West Bay Woodturners twice a month . These meetings are held the first Wednesday and the second Monday of each month. President's Challenges are continuing and to get credit please send in high quality photos of your items to Greg Peck or Mark Koenig.

## Demonstration—Michael Alguire

Michael Alguire is a native New Mexican, born in Albuquerque. He began his wood turning hobby in 2013 making pens and small wooden ornaments. His passion has grown and his art has flourished to intricate wood turned hollow forms, including bowls, vases and abstract art pieces like basket illusions and more intricate pieces called "Wheels of Delicacy."

Michael demonstrated how to create his intricate signature piece "Wheel of Delicacy" with the step- by- step process of prepping and turning the blank, sanding, aligning the pieces for glue-up, then using a dental drill to carefully carve out butterflies and holes. More photos of the demonstration showing his process can be found at:

<https://www.svwoodturners.com/prof-demos/alguire-2020>



| In This Issue                | Page |
|------------------------------|------|
| Virtual Meetings             | 1    |
| Monthly Demo—Michael Alguire | 1    |
| The President's Turn         | 2    |
| Calendar of Events           | 3    |
| Minutes                      | 4    |
| President's Challenge        | 5—6  |
| Show & Tell                  | 7—10 |
| Club Notes                   | 11   |
| Ironman Status 2020          | 12   |
| SVW Club Application         | 13   |
| Sponsors                     | 14   |
| Next Meeting & For Sale      | 15   |

# The President's Turn

## Zoom or be doomed

We grew up in a society where we learned to plan for everything. From early childhood we were taught that to have a better future we need a good education, we need to plan ahead for retirement by having a 401k, and for an accident that may or may not happen in the future we need to have insurance. But for some reason the world did not plan what to do about a pandemic though similar ones had happened in the past.

After our March meeting, even before any government mandate about social gatherings, we decided to cancel the April meeting for the sake of the health of our members. But it did not occur to me at that time that March was going to be the last time we meet as a social gathering in 2020. While I was sitting and pondering what to do next, I got a call from Bob Bley asking me whether SVW would be interested in doing joint online meetings with West Bay as an experiment. He had wasted no time in thinking this whole thing through.

I have always been an optimist, always thinking that when you have a bad day, it ends when you go to bed and you wake up to a brand-new day full of sunshine. Only time I know things are bad for the long haul is when I get on a municipal road with potholes, I know I am in it for the long haul and it is going to be potholes for eternity. In the middle of summer, I felt that schools will reopen in time for the new school year and we will slowly get back to having our regular meetings in the school shop. But Bob, though not a pessimist, thought differently. He said we are in this mess for the long haul, and he was right.

There are many people in our club with the hindsight. But Bob is unique. He has the insight to understand what is happening, and he has the foresight to do something about it. He knew, for the survival of the clubs, that we must adapt and do that fast.

When Bob asked me, who can be another host (a

representative from SVW) for the Zoom meetings, I could think of no one else other than Greg Peck. Greg had done many online meetings before as part of his involvement in city and neighborhood planning activities.

Mike Lanahan is another guy who does not take a back seat when it comes to challenges. He is always there to help with any challenge we have in front of us.

Together, the three amigos (Bob Bley, Greg Peck and Mike Lanahan) have refined the process and presentations for our online Zoom meetings. There is a lot involved behind the scenes in setting up an online Zoom meeting every month. They go through the process of collecting all the pictures from the members, putting it all together to create the PowerPoint presentations ready for the meetings. It is time consuming.

Though we miss the social aspect of gathering in a room, we have learned a lot out of the online meetings. For some people who did not enjoy the ride every month to come to the meetings, this is a blessing in disguise when they can attend the meeting sitting in the comfort of their home. These online meetings have also given us a new opportunity to show others the different stages of making our turnings which was not possible in a traditional show-n-tell format we had before.

As a club we owe a big debt of gratitude to Bob Bley, Greg Peck and Mike Lanahan for making sure that our organizations (SVW & WBW) were able to smoothly adapt to the situation.

Please join me in giving a salute to Bob Bley, Greg Peck and Mike Lanahan.

Though I have dreaded driving through pothole ridden municipal roads I have always managed to get back onto a smooth tarred road on the way home. And we shall overcome this pandemic too.

~ Hari ~

# 2020 Calender of Events

|   |  |   |
|---|--|---|
| <p><b><u>January</u></b><br/> <b>Wed. January 8th</b><br/> <b>BOD January 22nd at 4 p.m.</b></p> <p><b>President's Challenge:</b><br/> Name Badge</p> <p><b>Program:</b><br/> Show-N-Tell Forum - Dennis Lillis<br/> Bottom Treatment</p> | <p><b><u>February</u></b><br/> <b>Wed. the 5th</b></p> <p><b>President's Challenge:</b><br/> Miniature Turning</p> <p><b>Program:</b><br/> Mike Lanahan &amp; Dennis Lillis<br/> Coring Systems</p>      | <p><b><u>March</u></b><br/> <b>Wed. the 4th</b></p> <p><b>President's Challenge:</b><br/> Collaboration</p> <p><b>Program:</b><br/> Steve Dahout<br/> Jig for forming Morse taper</p>                     |
| <p><b><u>April</u></b><br/> <b>Wed. the 1st</b><br/> <b>BOD April 1st at 4 p.m.</b></p> <p><b>President's Challenge:</b><br/> Glue Up</p> <p><b>Program: Cancelled due to Covid19</b></p>   | <p><b><u>May</u></b><br/> <b>Wed. the 6th</b></p> <p><b>President's Challenge:</b><br/> Lidded Box</p> <p><b>Program: Show-N-Tell</b><br/> Saw Dust Session</p>  | <p><b><u>June</u></b><br/> <b>Wed. the 3rd</b></p> <p><b>President's Challenge:</b><br/> Thin Stemmed Item</p> <p><b>Program: President's Challenge</b><br/> Show-N-Tell</p>                              |
| <p><b><u>July</u></b><br/> <b>Wed. the 1st</b></p> <p><b>President's Challenge:</b><br/> School Donation</p> <p><b>Program: Craig Timmerman</b><br/> Winged Bowl</p>  | <p><b><u>August</u></b><br/> <b>Wed. the 5th</b><br/> <b>BOD August 1st (Sat.) at 4 p.m.</b></p> <p><b>President's Challenge:</b><br/> Top or Ring</p> <p><b>Program: Art Liestman</b><br/> Therming</p> | <p><b><u>September</u></b><br/> <b>Wed. the 2nd</b></p> <p><b>President's Challenge:</b><br/> Orthogonal Multi-Axis*</p> <p><b>Program: Mike Lanahan</b><br/> Photographing Your Work</p>                 |
| <p><b><u>October</u></b><br/> <b>Wed. the 7th</b><br/> <b>BOD October 7th at 7 p.m.</b></p> <p><b>President's Challenge:</b><br/> Inside Out Turning</p> <p><b>Program: Michael Alguire</b><br/> Wheel of Delicacy</p>                    | <p><b><u>November</u></b><br/> <b>Wed. the 4th</b></p> <p><b>President's Challenge:</b><br/> Kitchen Utensil**</p> <p><b>Program: Jim Rodgers (Nov. 9th)</b><br/> Segmenting</p>                         | <p><b><u>December</u></b><br/> <b>Wed. the 2nd</b><br/> <b>Holiday Dinner Cancelled</b></p> <p><b>President's Challenge: Fancy Finial</b></p> <p><b>Program: Don Bonnett</b><br/> Thin Stemmed Goblet</p> |

\*\* Not a bowl, platter, wine stopper

\* Not a sphere or an Egg

## Professional Virtual Demonstrations

|   |  |   |
|---|--|---|
| <p><b>Craig Timmerman—July 27, 2020</b><br/> <b>Winged Bowl</b></p> | <p><b>Art Liestman—August 5, 2020</b><br/> <b>Therming</b></p> | <p><b>Michael Alguire—October 7, 2020</b><br/> <b>Wheel of Delicacy</b></p> |
|---|--|---|

# SVW Meeting Minutes - October 7th, 2020



Meeting was called to order by the Zoom host, Greg Peck, at 7:05 p.m.

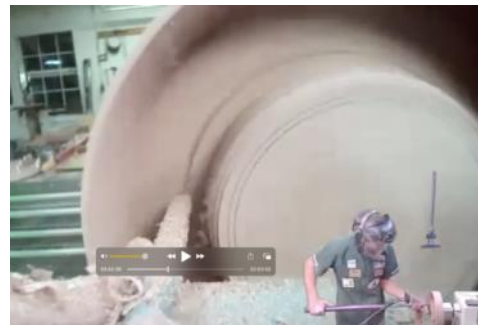
General Announcements:

**Ray Hari and Greg Peck (SVW)** – We will go straight to the Program today

**Program:**

**Demonstration by Michael Alguire –**

Michael demonstrated the making of his Wheels of Delicacy via Zoom from his shop in New Mexico. Michael showed in detail how a Wheel of Delicacy is made, from the beginning to the end. He also showed a few more techniques he uses for burning the wood to give special effects.



Meeting ended at ~9:08 p.m.



# President's Challenge: Orthogonal multi-axis

**Bob Gerenser**

Three axis pipe connector (September Makeup).



**Pete Nelson**

Christmas ornaments.



**Jim Loney**

Christmas ornaments.



# President's Challenge: Orthogonal multi-axis

**Mike Lanahan**

An inside-out vase that doesn't look like an inside-out turning except for the square hole.



**Pete Zavala**

Pair of inside-out turned candle sticks turned as a single piece.



# Show & Tell

## Tom Haines

Birch Bowl, Hollow Form (mango) with Finial (blackwood) using a #2 Morse Taper to connect finial to base.



## Dave Vannier

Segmented vase with three exterior levels of segments.



## Al Holstein





# Show & Tell

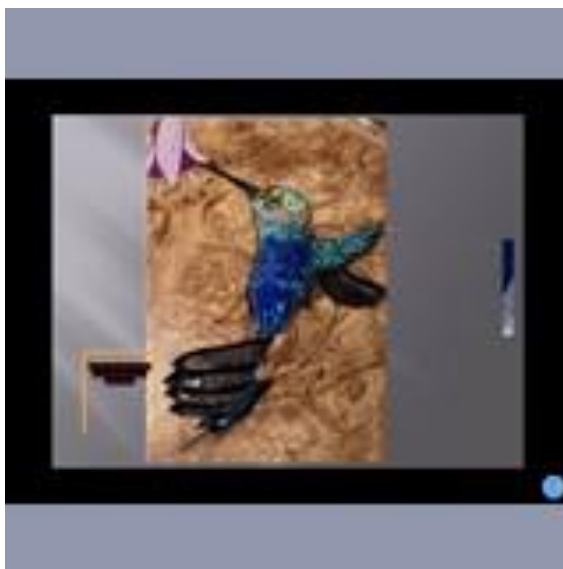
## Jon Sauer

Three tops with stands.



## Bob Bley

Hummingbird inlay using artificial opal.





# CLUB NOTES

## Officers, Staff, Volunteers and Contacts

|                            |                 |                |                            |
|----------------------------|-----------------|----------------|----------------------------|
| <b>President</b>           | Ray Hari        | (408) 806-6183 | r_hari@yahoo.com           |
| <b>V.P./Programs</b>       | Don Bonnett     | (408) 245-2009 | don.bonnett@sbcglobal.net  |
| <b>Prof. Demos</b>         | Don Bonnett     | (408) 245-2009 | don.bonnett@sbcglobal.net  |
| <b>Treasurer</b>           | Jim Loney       | (408) 248-1635 | sherlock44@gmail.com       |
| <b>Secretary</b>           | Greg Peck       | (408) 623-9156 | gregoreo@me.com            |
| <b>Newsletter Editors</b>  | Greg Peck       | (408) 623-9156 | gregoreo@me.com            |
|                            | Mark Koenig     | (408) 888-4944 | mskoenig52@gmail.com       |
| <b>Hospitality</b>         |                 |                |                            |
| <b>Membership Chair.</b>   | Greg Peck       | (408) 623-9156 | gregoreo@me.com            |
| <b>WIT Liason</b>          | Debbie Mancuso  |                |                            |
| <b>Photographers</b>       | Steve Balsbaugh | (408) 262-1564 | sbalsbaugh@att.net         |
|                            | Mike Lanahan    | (408) 926-9330 | mikelan@aol.com            |
| <b>Property Mgmt.</b>      | Greg Peck       | (408) 623-9156 | gregoreo@me.com            |
| <b>Librarian</b>           | Mark Koenig     | (408) 888-4944 | mskoenig52@gmail.com       |
| <b>Webmaster</b>           | Ray Hari        | (408) 806-6183 | r_hari@yahoo.com           |
| <b>Site Prep</b>           | Johnny Alias    | (408) 227-2423 | vet59@ix.netcom.com        |
|                            | Milton West     | (408) 729-6334 | miltwest@sbcglobal.net     |
| <b>Audio/Visual</b>        | Greg Peck       | (408) 623-9156 | gregoreo@me.com            |
| <b>Social Chair.</b>       | Bob Gerenser    | (408) 262-5411 | bob.gerenser@sbcglobal.net |
| <b>Pens for the Troops</b> | Jerry Galli     | (650) 369-4925 | tiretycoon@sbcglobal.net   |
| <b>Wood/Anchor Seal</b>    | Dennis Lillis   | (408) 353-3821 | denjlillis@gmail.com       |
| <b>Superglue</b>           | Tom Kenyon      |                | takenyon1@gmail.com        |

## Volunteer Instructors / Mentors

The turners below have graciously offered to open their shops to help members who want to learn to sharpen, try something new, or master a technique that just doesn't seem to be working. We all love to share.

**Mike Lanahan**, [mikelan@aol.com](mailto:mikelan@aol.com), (408) 926-9330 My mentoring strengths are an introduction to safely using the lathe, individual tool use, tool sharpening, making peppermills, coring with the Oneway system, bowl turning, applying finish with an airbrush, threading, boxes, vacuum chucking, shaving and makeup brushes. With the COVID-19 pandemic raging, I can assist over Zoom or FaceTime.

**Dennis Lillis**, [denjlillis@gmail.com](mailto:denjlillis@gmail.com), (408) 353-3821 Wood Processing and storing, tool selection and sharpening, turning technique for a variety of projects, sanding and preparation, finishing, hollowing, and coring.

**Bob Bley**, [rbley90@gmail.com](mailto:rbley90@gmail.com), I can help with general shop set up, dust collection, natural edge, hollowing and inlay to name a few. However, it will be virtual for the near term.

**Jerry Galli**, [tiretycoon@sbcglobal.net](mailto:tiretycoon@sbcglobal.net), I enjoy doing pens of all kinds, spindle work, natural edge bowls, coring with the Oneway system, hollow forms with finials, lidded boxes, kitchen ware items. I can also give you guidance on how to build a small kiln for wood drying. I am willing to mentor at my home workshop when it is safe and when the COVID 19 pandemic is over.

# 2020 Ironman

An IRONMAN is one who successfully completes all 12 President's Challenge projects for the year. Those who meet the challenge are awarded coveted and distinctive IRONMAN name badges. A blue bar in the accompanying chart means that person has completed the project for the month indicated. You needn't be a great turner, you just need to participate. Make something in our Challenge theme and bring it to the next meeting.

| President's Challenge<br>2020 | January: Name Badge | February: Miniature Turning | March: Collaboration | April: Glue-Up | May: Lidded Box | June: Thin Stemmed Item | July: School Donation | August: Top or Ring | September: Orthogonal Multi-Axis* | October: Inside Out Turning | November: Kitchen Utensil** | December: Banquet Gift Exchange |
|-------------------------------|---------------------|-----------------------------|----------------------|----------------|-----------------|-------------------------|-----------------------|---------------------|-----------------------------------|-----------------------------|-----------------------------|---------------------------------|
| Alias, Johnny                 |                     |                             |                      |                |                 |                         |                       |                     |                                   |                             |                             |                                 |
| Andersen, Max                 |                     |                             |                      |                |                 |                         |                       |                     |                                   |                             |                             |                                 |
| Balsbaugh, Steve              |                     |                             |                      |                |                 |                         |                       |                     |                                   |                             |                             |                                 |
| Belden, Charlie               |                     |                             |                      |                |                 |                         |                       |                     |                                   |                             |                             |                                 |
| Bocks, Charles                |                     |                             |                      |                |                 |                         |                       |                     |                                   |                             |                             |                                 |
| Brown, David                  |                     |                             |                      |                |                 |                         |                       |                     |                                   |                             |                             |                                 |
| Dahout, Steve                 |                     |                             |                      |                |                 |                         |                       |                     |                                   |                             |                             |                                 |
| Fox, John W.                  |                     |                             |                      |                |                 |                         |                       |                     |                                   |                             |                             |                                 |
| Galli, Jerry                  |                     |                             |                      |                |                 |                         |                       |                     |                                   |                             |                             |                                 |
| Gee, Avery                    |                     |                             |                      |                |                 |                         |                       |                     |                                   |                             |                             |                                 |
| Gerenser, Bob                 |                     |                             |                      |                |                 |                         |                       |                     |                                   |                             |                             |                                 |
| Hari, Ray                     |                     |                             |                      |                |                 |                         |                       |                     |                                   |                             |                             |                                 |
| Koenig, Mark                  |                     |                             |                      |                |                 |                         |                       |                     |                                   |                             |                             |                                 |
| Krug, Glen                    |                     |                             |                      |                |                 |                         |                       |                     |                                   |                             |                             |                                 |
| Lanahan, Mike                 |                     |                             |                      |                |                 |                         |                       |                     |                                   |                             |                             |                                 |
| Lee, Kevin                    |                     |                             |                      |                |                 |                         |                       |                     |                                   |                             |                             |                                 |
| Levin, Gordon                 |                     |                             |                      |                |                 |                         |                       |                     |                                   |                             |                             |                                 |
| Lillis, Dennis                |                     |                             |                      |                |                 |                         |                       |                     |                                   |                             |                             |                                 |
| Loney, Jim                    |                     |                             |                      |                |                 |                         |                       |                     |                                   |                             |                             |                                 |
| Martinka, Joe                 |                     |                             |                      |                |                 |                         |                       |                     |                                   |                             |                             |                                 |
| McCutcheon, David             |                     |                             |                      |                |                 |                         |                       |                     |                                   |                             |                             |                                 |
| Moody, Marcus                 |                     |                             |                      |                |                 |                         |                       |                     |                                   |                             |                             |                                 |
| Nelson, Pete                  |                     |                             |                      |                |                 |                         |                       |                     |                                   |                             |                             |                                 |
| Patnude, Gordon               |                     |                             |                      |                |                 |                         |                       |                     |                                   |                             |                             |                                 |
| West, Milton                  |                     |                             |                      |                |                 |                         |                       |                     |                                   |                             |                             |                                 |
| Whittier, John                |                     |                             |                      |                |                 |                         |                       |                     |                                   |                             |                             |                                 |
| Yaggi, David                  |                     |                             |                      |                |                 |                         |                       |                     |                                   |                             |                             |                                 |
| Pete Zavala                   |                     |                             |                      |                |                 |                         |                       |                     |                                   |                             |                             |                                 |

## Editor's Note

If we've somehow overlooked your President's Challenge entry, send an email to:

Greg Peck

gregoreo@me.com

or

Mark Koenig

mkskoenig52@gmail.com

## IRONMAN Rules

- There are twelve challenges listed for the year and in order to qualify for Ironman you must show, by the end of the year, that you have completed all twelve challenges.
- Challenge entries should be shown at the meeting corresponding to the challenge schedule.

# SVW NEEDS YOU!

**It takes more than the officers** and program chairs to make our club function at its best. This is a HELP WANTED ad, and we need you to respond. There are always things that need doing. In particular, we need:

- Volunteers for shop tours
- Volunteers to present/demonstrate at meetings
- Short articles or Tips & Tricks for the *Chips & Chatter* newsletter

Please contact [gregoreo@me.com](mailto:gregoreo@me.com) to volunteer and help make our activities happen.

**OTHER WOODTURNING CLUBS:** You may use materials in this newsletter for the benefit of other turners. Please credit Silicon Valley Woodturners and the newsletter month and year for any material you use, and mention our web site: [www.svwoodturners.com](http://www.svwoodturners.com). Note that if we've flagged an article as having been reprinted from another source with permission, you must secure that same permission in order to use that material.

## Join Silicon Valley Woodturners

Want to join a great group of turning enthusiasts in an atmosphere of sharing and camaraderie? Become a member of Silicon Valley Woodturners. We meet on the **First** Wednesday of each month. See last page of newsletter for details on where we meet. Drop in at any meeting and check things out. Learn more about our club on the web at [www.svwoodturners.com](http://www.svwoodturners.com).

Individual Membership: \$35 per year

Family Membership: \$45 per year

Membership dues are pro-rated for new members that join mid year.

# Sponsors



**WOODCRAFT®**  
**Helping You Make Wood Work®**

**Eric McCrystal**  
Store Manager

Woodworking Tools • Books • Supplies • Lumber • Classes

**SEANNA WOODWORKS, INC.**  
d/b/a **WOODCRAFT**  
40 El Camino Real  
San Carlos, CA 94070

Phone: 650.631.9663  
Fax: 650.631.9633  
woodcraft561@mac.com  
[http://stores.woodcraft.com/san\\_carlos](http://stores.woodcraft.com/san_carlos)

**Secured Storage for Autos, Boats and RVs**

**Pedron's Storage**

Storage Location: 6150 San Ignacio Ave., San Jose, CA 95119  
**408-269-5200**  
**www.pedronsrstorage.com**

Serving San Jose For Over 40 Years!

Office Hours: Tues-Fri 10-5

Our outside storage facility has:  
24 hour Cardkey Access • Monitored Electronic Surveillance  
Competitive Rates • Month-To-Month Lease





1492 Soquel Ave  
Santa Cruz, CA 95062  
831-425-1492

**Chocolates Worth Their Calories™**



# Next Meeting...

**MEETINGS AT WOOD SHOP ARE  
TEMPORARILY CANCELLED DUE TO THE  
CORONA VIRUS PANDEMIC.**



## FOR SALE

### Anchor Seal

One gallon Anchor Seal \$15

Contact Dennis Lillis (see Club Notes for contact information).

### CA Glue (Superglue)

Contact Tom Kenyon (see Club Notes for contact information).

### Badges and Hats

SVW Hat \$10      SVW Badge \$2

Contact Greg Peck (see Club Notes for contact information).

### Bowl Coring System for sale

Woodcut Bowlsaver MAX3

Woodcut Bowlsaver Laser Guide

**\$350**

Contact: Jerry Galli 1-650-369-4925

